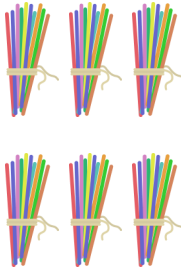
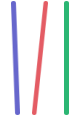


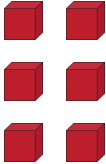


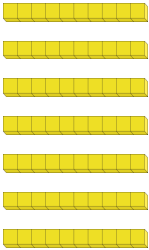
YR1 PROGRESSION IN MASTERY LESSON PACK - PARTITIONING NUMBERS

FLUENCY 1

Complete the place value grids.

Tens	Ones
	

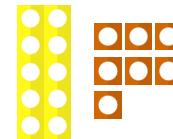
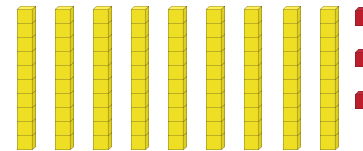
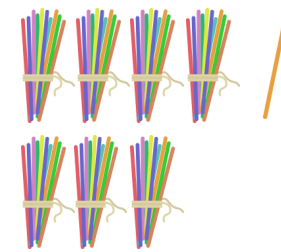
Tens	Ones
	
8	

Tens	Ones
	
	2

Tens	Ones
9	1

FLUENCY 2

Match the images to the numbers.



93

71

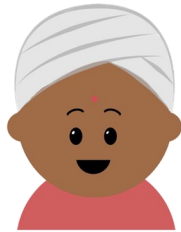
82

seventeen





REASONING 1



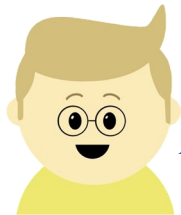
My number has 6 tens and 7 ones.

Ranjit has made 76.



Anita

Alfie



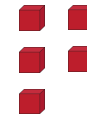
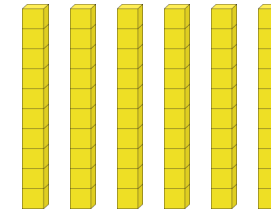
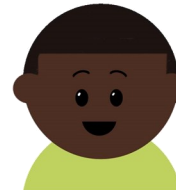
His number is 67.

Who do you agree with?

Explain why the other person is wrong.

REASONING 2

Caleb has tried to make 56.

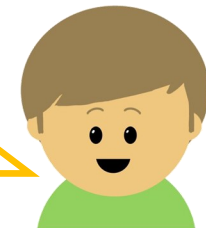


Spot his mistakes and correct them.

REASONING 3

Do you agree with Jerry?

83 has 8 tens because I have to look at the first digit to know how many tens it has.



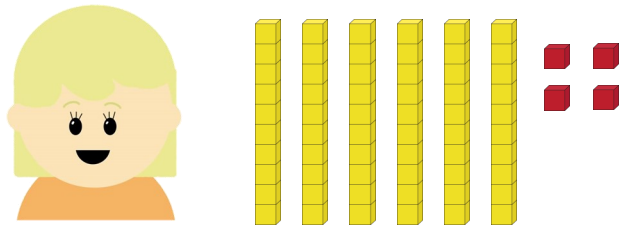
Explain what you know.





PROBLEM SOLVING 1

Jane has some base 10.



There are 3 more pieces in the bag.



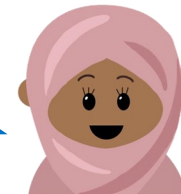
Which pieces could they be?
Which numbers could she make?

PROBLEM SOLVING 2

Asha also has some base 10.



I have 8 pieces in my bag.



What are all the possible amounts she could have?
Draw them.

