



FLUENCY 1

What information does the pie chart present?

Key Stage 1's Pets



■ Dog ■ Cat ■ Hamster ■ Rabbit ■ Fish

The pie chart represents the _____.

Each part represents a _____.

NOW... Complete the stem sentence below for each colour.

The _____ part/s represent/s the number of _____.

FLUENCY 2

There are 56 children with pets in Key Stage 1.

Use this fact and the pie chart from Fluency 1 to complete the stem sentences...

The value of the whole is _____.

It is split into _____ equal parts.

_____ ÷ _____ = _____

The value of each part is _____.

NOW... Complete the stem sentences below for each colour.

There is/are _____ part/s.

_____ x _____ = _____

_____ of the children have a _____.





FLUENCY 3

There are 130 children in Key Stage 2.

Key Stage 2's Favourite Colours



■ Red ■ Blue ■ Green ■ Yellow ■ Pink ■ Purple

Use the pie chart to calculate the number of children who voted for each colour.

FLUENCY 4

Use the pie chart from Fluency 3 to answer the following questions...

What fraction of the children chose red?
Give your answer in its simplest form.

How many more children chose pink than green?

Which was the most popular colour?

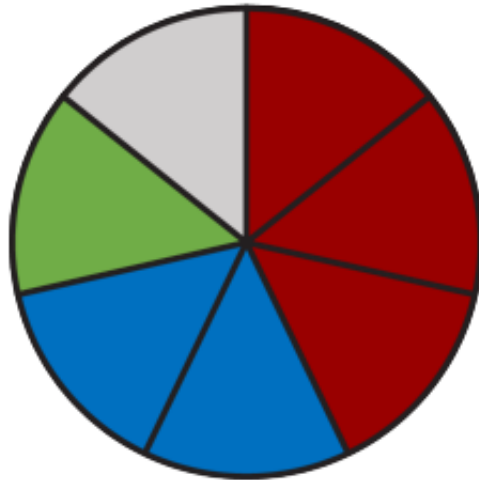
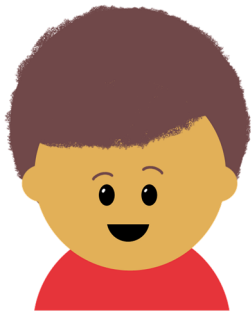
If 290 children voted and their pie chart looked identical, how many would have chosen each colour?





REASONING 1

Marlon created a pie chart representing the eye colours of the 21 teachers at his school.



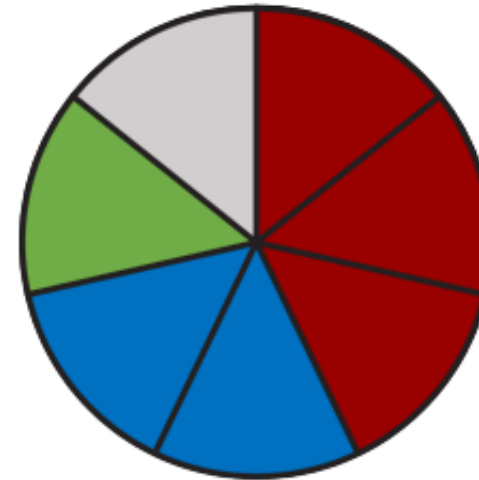
■ Brown ■ Blue ■ Green ■ Grey

Marlon says that half of his teachers have brown eyes.

Do you agree with him?
Explain your reasoning!

REASONING 2

Marlon created a second pie chart representing the eye colours of the 63 children in his year group.



■ Brown ■ Blue ■ Green ■ Grey

True or False?

An equal number of teachers and children have blue eyes.

Prove it!



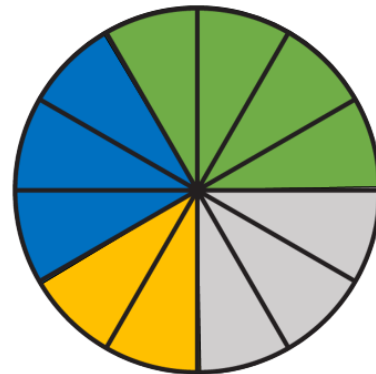


PROBLEM SOLVING 1

Jane conducted a survey to find out which genre of books the children at her school most enjoy reading.

She presented the results of the survey in a pie chart.

Use the clues to work out which genre each colour represents. Is there more than one solution?



The fantasy genre was the most popular choice.

Sci-Fi and fairy tales received one hundred and forty-four votes altogether.

Forty-eight children voted for the mystery genre.

NOW... Work out how many children voted for each genre and how many took the survey in total.

