

# YEAR FOUR CURRICULUM FOCUS

Autumn 2025



## **Topic Title: British Empire**

### English



In English this half-term we will be looking at the place value of punctuation and grammar. We will consider the different types of nouns and verbs and how to most effectively construct sentences. We will also be working on our handwriting.

Following that, we will look at the poetry of AF Harrold and use him as inspiration to write our own performance poetry. Finally, we will learn about persuasive techniques and apply these to writing a leaflet.

### Maths

In Maths this term we will be:

- Reviewing column addition and subtraction.
- Looking at numbers to 10,000 including converting measures, rounding and comparing.
- Perimeter
- The 3,6,9 and 12 times tables and associated facts.

### Science

In Science we will be making an enquiry into living things and their habitats. We will specifically be looking at how to classify organisms that live in different habitats and the human impact on wildlife.

We will then look at the digestive system of humans, the types and functions of teeth and finally food chains which we will link back to our previous work on habitats.

### Foundation Subjects

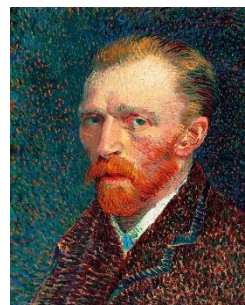
**History:** This term we will be investigating the historical and modern impact of the British Empire.

**Art:** We will be learning about the artist Vincent Van Gogh and how he impacted the postimpressionism movement.

**RE:** In RE we will be looking at Sikhism including their places of worship and associated symbolism.

**DT:** Next half-term in DT we will be adapting recipes to make our own biscuits.

**PE:** In PE we will be doing ball handling, gymnastics and swimming.



### Homework Expectations:

Each week can you please:

- Do three sessions on Spelling Shed
- Complete at 21 'Garages' on Times Table RockStars
- Read at least 4 times a week – bookmarks need to be initialled each time a child reads with an adult

### Additional Information & Reminders:

- PE days are Wednesdays and Thursdays, please can children come to school in their PE kit.
- We will be doing outdoor learning this term, date to be confirmed, please can children come to school in appropriate clothing and footwear- waterproofs and wellies please!
- Please send children daily with a water bottle.